

Welcome

Shoreline HiCap Advisory - November 7, 2018



Committee Norms

Our Norms/Agreements:

- Utilize what you have learn
- Accept that this is ongoing work
- Understand our charge and stay focus
- Presume positive intentions
- Come prepared
- Monitor Air Time - Equitable Engagement



Agenda

1. Activator - *Getting to know our team*
2. Updates
3. Goals for the year
4. Review and connect with priorities
5. Communication & partnership plan
6. Nuts & Bolts



Activator

Getting to know our team



2018-2019 Updates



Updates from OSPI

Since we last met...

- New House Bill for language testing
- Requirements for prioritizing equitable identification - increase participation of :
 - Linguistically diverse students
 - Low income students

Shoreline Updates

Since we last met...

- Implementing CLED scales
- Secondary Committee Recommendations
 - Annual process to “opt in” or “opt out” of services
 - Pursue strategies/models to provide social emotional support for Highly Capable students
 - At the middle school level, students will be grouped in cohorts for ELA and math.

Shoreline Updates

Since we last met...

- Professional Learning & Support
 - Magnet teacher training w/Jennifer Etter & Roger Fisher
 - School-wide English/Language Arts professional learning at schools
- District-wide focus on Student Centered Instruction

2018-2019 Goals



Shoreline Goals



Create math enrichment tasks

Use District CEE Survey data to inform our work

Change our Kindergarten model to reflect best practices

Review math model (walk-to-math)

Continue to develop and deliver high quality professional learning

Explore high school AP Capstone course



Review & Connect with 2017-2018 Priorities



Review & Connect with Priorities



1 st Priority	2 nd Priority	3 rd Priority	4 th Priority
Survey or way to hear from community how well new services are meeting needs of students.	Feedback on selections/appeals processes	Reviewing student data from students participating in new programs (walk to math, ELA)	
Reflect on and provide feedback on changes to program.	Equitable access to services.	Getting kids identified even if they want to stay at home school.	
Collect and reflect on feedback on the changes.	Kindergarten.	Look at alternative options for serving HiCap (depth vs. acceleration)	
Look at other models for math instruction e.g. compacting vs. skipping	Evaluate and support new home-school programs – teachers and administrators.	Ways to connect families of gifted students in home schools for peer groups.	Teacher training in math and ELA
Coordination between HiCap office, SHAG/SHPA, PTAs, etc.	Learn about equity issues in math instruction.	Parent communication (current + potential / future HiCap parents)	
Be able to see and understand the big picture and be able to identify and collaborate on solutions to improve implementation and outcomes.	Envisioning/Imagining program development. Guidance.	Bridge the gap between district and community by being communicators (listening and sharing) Seek representative input/feedback.	
Research the option or a continuum of services.	Program Guidance		
Have reliable and concrete information and knowledge of what is happening to be able to talk with other parents.	Family nights?		
Improve communication with parents and teachers (timely, results, expectations, next steps, etc.)	Clarify programs at schools.		



Communication & Collaboration Plan



Goal is to have some form of
monthly connection with families

2018-2019

November 2018

HiCap Advisory

December 2018

HiCap Newsletter

January 2019

Shoreline HiCap Parent Association

February 2019

HiCap Advisory

March 2019

HiCap Newsletter

April 2019

Shoreline HiCap Parent Association

May 2019

HiCap Advisory

**Connecting
with
Community**



2019 - 2020

Connecting with Community

September 2019

Shoreline HiCap Parent Association

October 2019

HiCap Advisory

November 2019

HiCap Newsletter

January 2020

Shoreline HiCap Parent Association

February 2020

HiCap Advisory

March 2020

HiCap Newsletter

April 2020

Shoreline HiCap Parent Association

May 2020

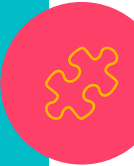
HiCap Advisory

June 2020

HiCap Newsletter



Nuts & Bolts



Feedback

Additional questions to guide our work? New wonderings....

"Tell us what you think!"



Insight I am taking away from tonight's meeting...

Feedback??



Next Meeting



February 4th
@ 4-5:30 pm

