

# Dual Language Program at Briarcrest Elementary

## Guide to Enrollment for Incoming Kindergartners



Briarcrest's Dual Language Program is a two-way developmental bilingual program, in which half of the students in each class will be native Spanish speakers and half will be native English speakers.

All entering Shoreline families complete the Home Language Survey for their child as part of enrollment. Students will be considered eligible for entry into the Dual Language Program as Spanish speakers based on the Home Language Survey and successful participation in the Spanish Entry Task.

### Briarcrest Residents

- **February** – Enroll in Kindergarten at Briarcrest Elementary School
- **February** – Submit Dual Language Supplemental Enrollment Form at Briarcrest
- **March 1** – Students will be selected by lottery to fill 80% of seats in each language (Spanish and English)
- Interested students who were not selected in the March lottery will be added to the May lottery
- Students selected as Native/Heritage Spanish speakers will be invited to participate in the Spanish Entry Task (successful participation required)
- **Fourth Friday of May** – Students will be selected by lottery at the end of the business day to fill the remaining 20% of seats in each language (Spanish and English)

### Enrollment after fourth Friday of May prior to K – January 31 of First Grade

Briarcrest wait lists by language will be created after May including any Briarcrest residents not selected through the earlier process. Newly enrolling families will be given information about Dual Language and will be added to the Briarcrest wait list if desired. When a vacancy occurs, the principal will review the Briarcrest wait list and consult with the family and staff to place the next student in the Dual Language Program.

### Enrollment from February 1 of First Grade – 5th Grade

No further English admission\*. When a Spanish vacancy occurs, the principal will review the wait list and consult with the family and staff to place a student in the program.



# Continued...

## Out-of-Briarcrest Shoreline Residents

- **February** – Enroll in Kindergarten at student's home school
- **February** – Submit Dual Language Supplemental Enrollment Form at Briarcrest
- Student's name will be placed on district Dual Language wait list by language (Spanish and English)
- **NOTE** – out-of-Briarcrest children of district employees will be considered on wait list before other out-of-Briarcrest students
- **Fourth Friday of May** – Any vacant seats not filled by Briarcrest students will be filled by out-of-Briarcrest students by lottery at the end of the business day to fill the remaining seats in each language (Spanish and English)
- Students selected for Spanish seats will be invited to participate in the Spanish Entry Task (successful participation required)

## Enrollment after fourth Friday of May prior to K – January 31 of First Grade

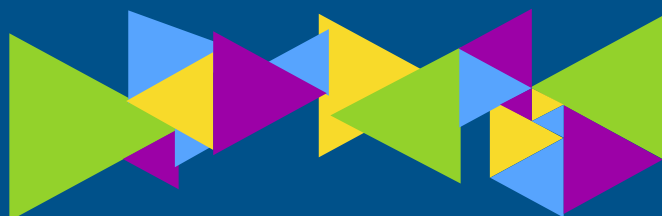
District wait lists by language will be created after May including any out-of-Briarcrest residents not selected through the earlier process. After students on the Briarcrest wait list have been offered admission, the first student on the District wait list shall be offered the spot. Out-of-Briarcrest children of district employees will be considered on wait list before other out-of-Briarcrest students.

## Enrollment from February 1 of First Grade – 5th Grade

No further English admission\*. After students on the Briarcrest wait list have been offered admission, the first student on the District wait list shall be offered the spot. Out-of-Briarcrest children of district employees will be considered on wait list before other out-of-Briarcrest students.


\*Native English speakers may be admitted to the program on a case-by-case basis after February 1 of First Grade, depending on the student's ability to be successful in the Spanish portions of the day and the family's ability to support Spanish language acquisition.

Non-native English speakers other than Spanish may be considered for placement in the English literacy group before February 1 of First Grade. A minimum score of Level 2 on the ELL placement test is recommended, but each student will be considered on a case-by-case basis.



## Questions?

Contact Principal Jonathan Nesson:

 (206) 393-4170

 [jonathan.nesson@shorelineschools.org](mailto:jonathan.nesson@shorelineschools.org)