

Fairy tales take the stage in November



Shorecrest High School (above) will present Stephen Sondheim's fairy-tale musical "Into the Woods." Performances are Nov. 12-14 and 19-21 at 7:30 p.m. and Nov. 15 and 22 at 2 p.m. at the Shorecrest Performing Arts Center, 15343 25th NE. Tickets are available at Third Place Books in Lake Forest Park Towne Centre or by e-mail at [sc.tickets@shorelineschools.org](mailto:sc.tickets@shorelineschools.org).

Shorewood High School will present "Alice's Adventures in Wonderland." Performances are November 13, 14, 19, 20 & 21 at 7:30 pm in the Shorewood HS Theater, 17300 Fremont Ave. N. Tickets are available at Shorewood and Beach House Greetings, 626 NW Richmond Beach Road in Shoreline. The script is adapted from the original text by drama teacher and director Barb Lachman.

## November 2009

- 9 • School Board Committee of the Whole meeting, 4:30 p.m., Shoreline Center
- 10 • Einstein MS concert, 7 p.m.
- 10 • Shorecrest Veterans Day assembly
- 11 • No School, Veterans Day
- 12-15, 19-22 • Shorecrest fall musical, "Into the Woods"
- 13-14, 19-21 • Shorewood fall play, "Alice's Adventures in Wonderland"
- 16 • School Board meeting, 7 p.m., Shoreline Center
- 17 • Kellogg MS band concert, 7 p.m.
- 24 • Kellogg orchestra/choir concert, 7:30 p.m.
- 25 • Early Release, Grades K-12
- 26-27 • No School, Thanksgiving Break
- 30 • No School, Staff Work Day

# Community Connections

Produced by the Shoreline Public Schools

[www.shorelineschools.org](http://www.shorelineschools.org)

## High school designs reflect community values

For more than two years, the Shoreline School District has been planning for the modernization/replacement of Shorecrest and Shorewood High Schools.

When the 2006 bond issue was approved by Shoreline and Lake Forest Park voters, it included funding for design of both buildings. The Shoreline School Board is considering placing a bond issue on the Feb. 9, 2010 ballot to fund the construction costs for modernization/replacement of both Shorecrest and Shorewood.

Shorecrest was opened in 1961, while Shorewood was opened in 1975 by remodeling Butler Junior High (built in 1953) and Ronald Elementary School (built in 1951).

The Shorecrest and Shorewood design teams were made up of faculty, staff and parents from each high school and community representatives from each of the middle schools and elementary schools on the respective sides of the District. The School Board adopted educational goals for the projects. Each team held three community meetings to gather input from the public, which the architects used to help create the preferred designs for Shorecrest and Shorewood.

Models of the designs are now on display at the two high schools and are also being shown at other buildings throughout the District. Both schools' conceptual schematic designs include three-story main academic buildings.

At Shorecrest (seen at right), the new building would be set back farther from 25th Avenue Northeast than the current structure. The modernization would occur in phases, with students occupying the portions of the building not under construction. The existing Shoreline Performing Arts Center would remain in its present location at the north end of the campus.

The Shorewood site is a greater challenge, as it is only 26 acres while Shorecrest is more than 38 acres.

At Shorewood (below right), the preferred design is centered in the northeast portion of the campus.

The current plan includes the integration of the historic Ronald School building for visual and performing arts. Shorewood students would be able to continue using the majority of the existing building while the new school is built on the remainder of the site.

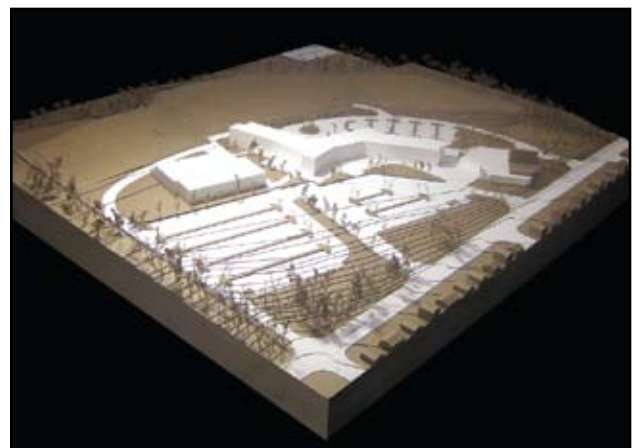
The new school would be a cornerstone of the Town Center concept planned for central Shoreline, where the new City Hall at Northeast



Shoreline School Board members donned hardhats to celebrate the completion of the high school conceptual designs.

175th and Midvale Avenue North was recently opened.

If the bond issue is approved in February, construction would begin at both sites in 2011, with estimated completion in time for the 2013-14 school year. For more information on the Shorewood and Shorecrest designs, visit [www.shorelineschools.org](http://www.shorelineschools.org).



The conceptual design for Shorecrest High School, looking northwest from 25th Avenue Northeast.



The conceptual design for Shorewood High School, looking north into the central commons area.