

An architectural rendering of a school hallway. The scene is viewed from a low angle, looking down a long corridor. On the left, a large, dark, cylindrical column stands prominently. The ceiling features a series of parallel beams. The walls are covered in a grid of lines, suggesting a window or glass wall. In the distance, several figures are walking, and a large, light-colored, angular object is visible on the right. A semi-transparent red horizontal band is overlaid across the middle of the image, containing white text.

integrus
ARCHITECTURE

Shoreline Public Schools

Shorecrest High School – 10.25.10

QUALITY LEARNING ENVIRONMENT

spaces that support a comprehensive learning experience

SCHOOL IDENTITY

honor the history of the school and the district

SAFETY & SECURITY

safe and secure facility
good supervision

DURABILITY

materials allowing for efficient and cost effective maintenance

CENTER OF COMMUNITY

an environment that honors community values and promotes community access

FLEXIBLE ENVIRONMENT

focused on learning and teaching now and in the future

ENVIRONMENTALLY RESPONSIBLE CAMPUS

Site Plan



Perspective





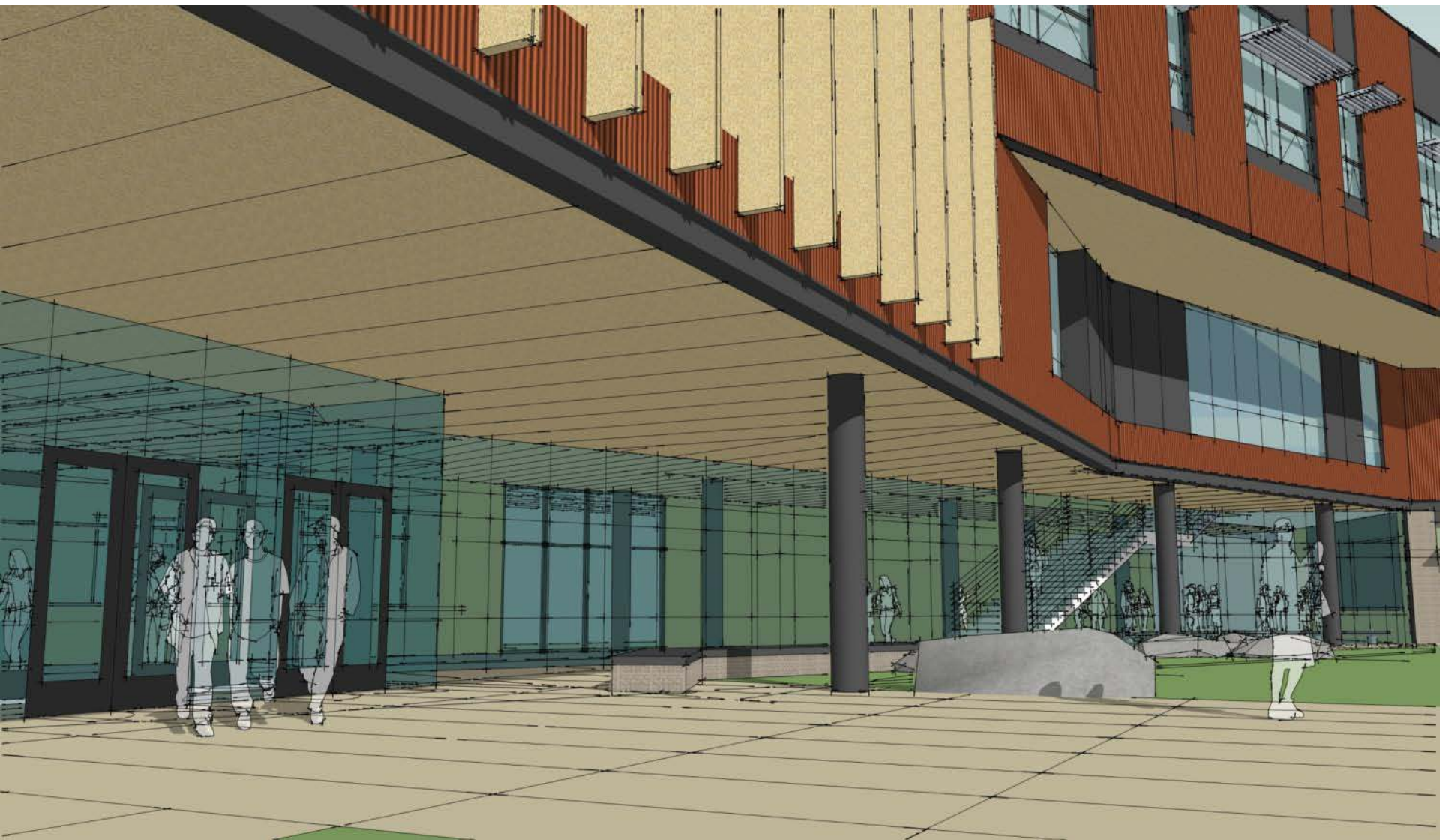




Perspective



Perspective





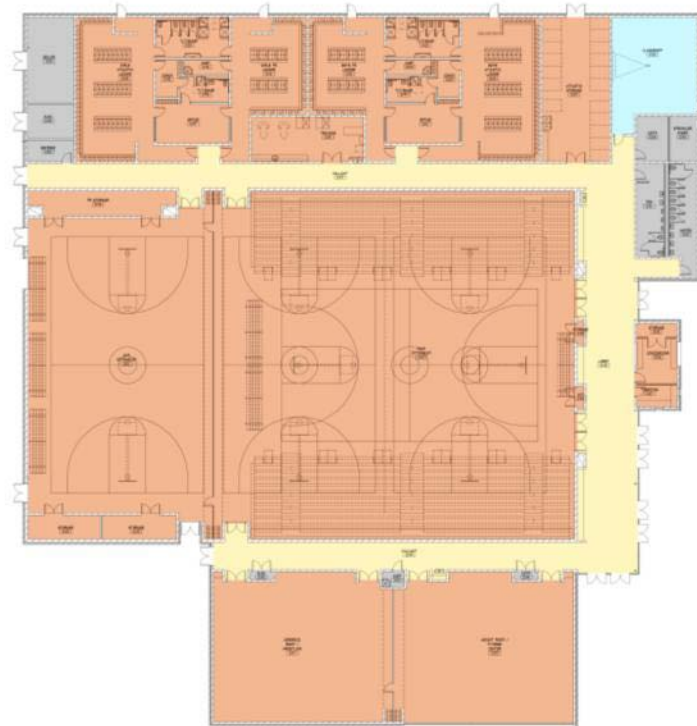
Perspective



Site Plan



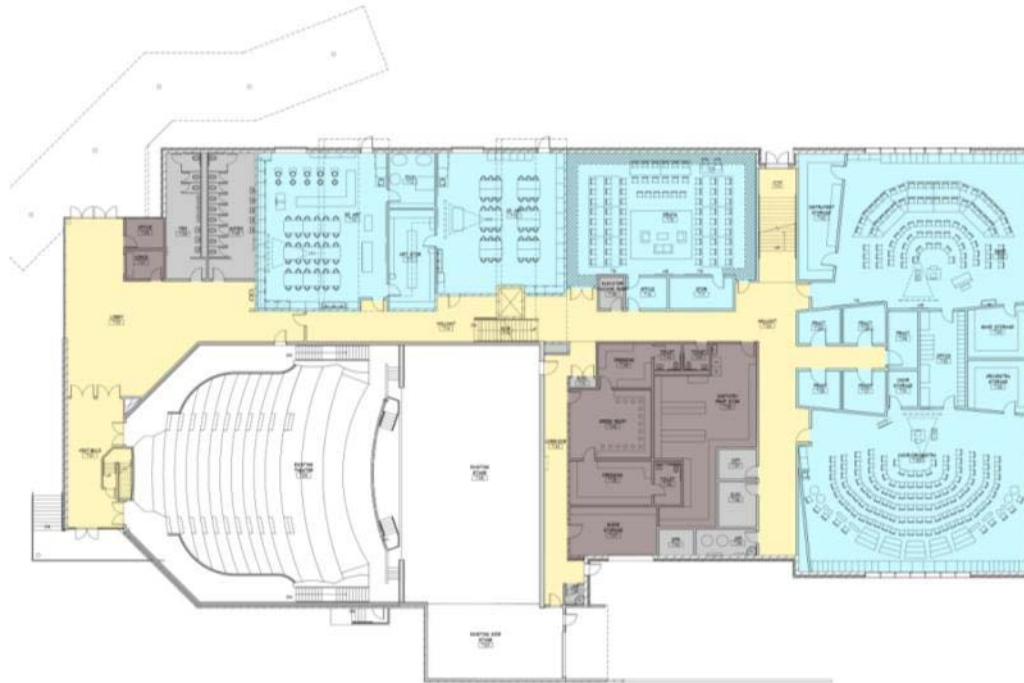
Gym Building Plan



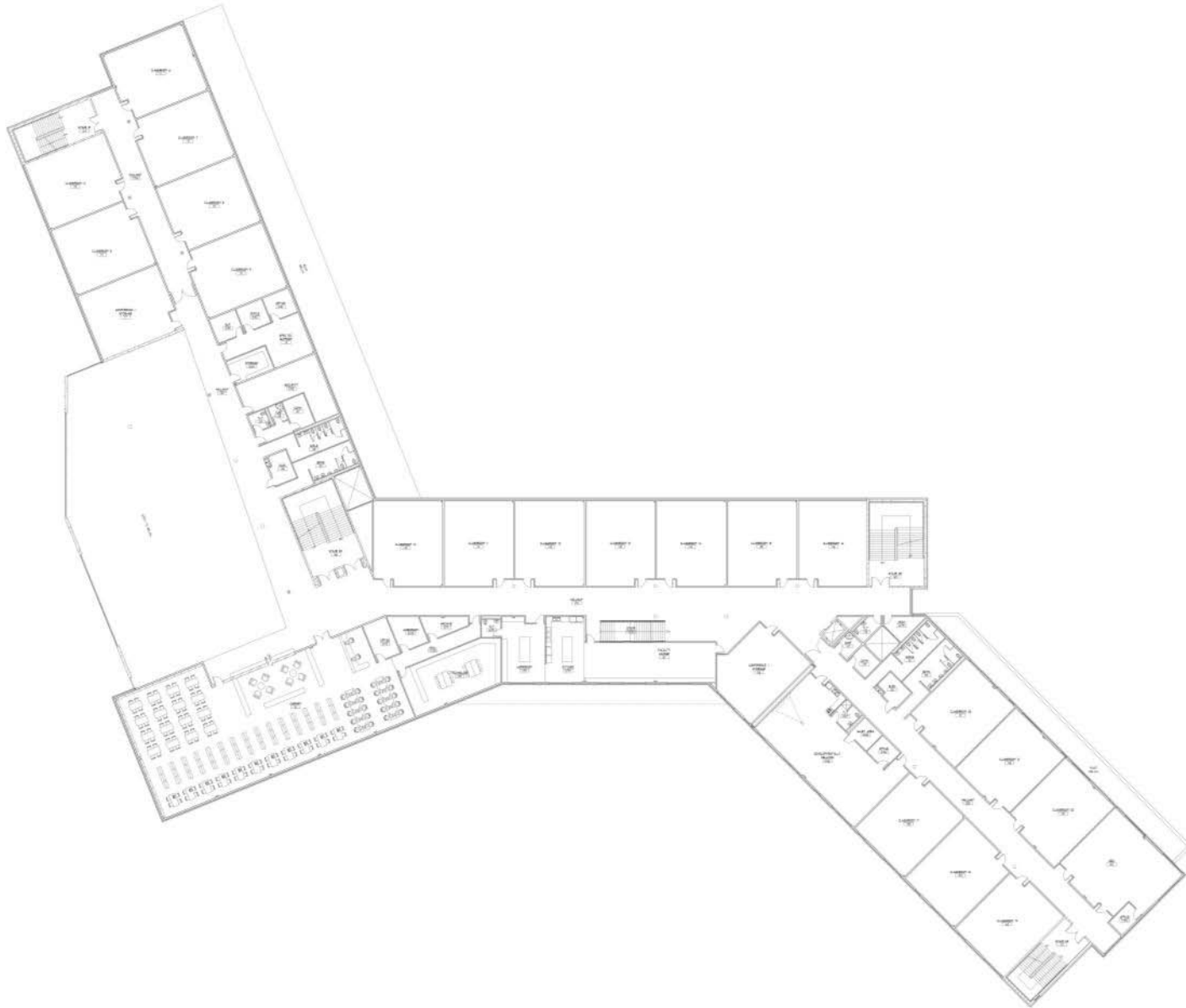
Main Building 1st Floor Plan



Theater Building Plan



Main Building 2nd Floor Plan



Main Building 3rd Floor Plan

